

bsm-61896R**[Primary Antibody]**

www.bioss.com.cn

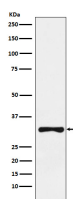
sales@bioss.com.cn

techsupport@bioss.com.cn

400-901-9800

RYBP Recombinant Rabbit mAb**— DATASHEET —**

Host: Rabbit	Isotype: IgG	Applications: WB (1:1000-2000) IHC-P (1:100-200) IHC-F (1:100-200) IF (1:50-200) Flow-Cyt (1:50-100) ICC/IF (1:50-200) IP (1:20-50) Reactivity: Human, Mouse, Rat Predicted MW.: 25 Subcellular Location: Cytoplasm ,Nucleus
Clonality: Recombinant		
GeneID: 23429	SWISS: Q8N488	
Target: RYBP		
Immunogen: A synthesized peptide derived from human RYBP: 180-228/228.		
Purification: affinity purified by Protein A		
Storage: 10mM phosphate buffered saline(pH 7.4) with 150mM sodium chloride, 0.05% BSA, 0.02% Proclin300 and 50% glycerol. Store at 4°C for short term. Store at -20°C for long term. Avoid repeated freeze/thaw cycles.		
Background: Component of a Polycomb group (PcG) multiprotein PRC1-like complex, a complex class required to maintain the transcriptionally repressive state of many genes, including Hox genes, throughout development. PcG PRC1-like complex acts via chromatin remodeling and modification of histones; it mediates monoubiquitination of histone H2A 'Lys-119', rendering chromatin heritably changed in its expressibility.		

— VALIDATION IMAGES —

Western blot analysis of SW480 cell lysate. Using RYBP (bsm-61896R) monoclonal antibody at 1:1000 dilution and 4°C overnight incubation. Followed by conjugated secondary antibody incubation at r.t. for 60 min.