

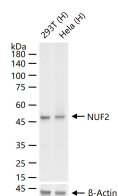
bsm-61893R**[Primary Antibody]****BioSS**
ANTIBODIES

www.bioss.com.cn

sales@bioss.com.cn

techsupport@bioss.com.cn

400-901-9800

NUF2 Recombinant Rabbit mAb**— DATASHEET —****Host:** Rabbit**Isotype:** IgG**Clonality:** Recombinant**CloneNo.:** 10B12**GeneID:** 83540**SWISS:** Q9BZD4**Target:** NUF2**Immunogen:** A synthesized peptide derived from human NUF2: 1-52/464.**Purification:** affinity purified by Protein A**Storage:** 10mM phosphate buffered saline(pH 7.4) with 150mM sodium chloride, 0.05% BSA, 0.02% Proclin300 and 50% glycerol.
Store at 4°C for short term. Store at -20°C for long term. Avoid repeated freeze/thaw cycles.**Background:** Acts as a component of the essential kinetochore-associated NDC80 complex, which is required for chromosome segregation and spindle checkpoint activity. required for kinetochore integrity and the organization of stable microtubule binding sites in the outer plate of the kinetochore.**Applications:** WB (1:500-2000)**Flow-Cyt** (1:50-100)**ICC/IF** (1:50-200)**Reactivity:** Human**Predicted
MW.:** 54**Subcellular
Location:** Nucleus**— VALIDATION IMAGES —**

25 ug total protein per lane of various lysates (see on figure) probed with NUF2 monoclonal antibody, unconjugated (bsm-61893R) at 1:1000 dilution and 4°C overnight incubation. Followed by conjugated secondary antibody incubation at r.t. for 60 min.