

**bsm-61891R****[ Primary Antibody ]**

## Gephyrin Recombinant Rabbit mAb

**Bioss**  
ANTIBODIES

www.bioss.com.cn

sales@bioss.com.cn

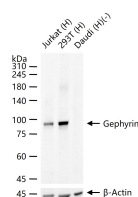
techsupport@bioss.com.cn

400-901-9800

### — DATASHEET —

**Host:** Rabbit**Isotype:** IgG**Clonality:** Recombinant**CloneNo.:** 6B3**GeneID:** 10243**SWISS:** Q9NQX3**Target:** Gephyrin**Immunogen:** A synthesized peptide derived from human Gephyrin: 1-54/736.**Purification:** affinity purified by Protein A**Storage:** 10mM phosphate buffered saline(pH 7.4) with 150mM sodium chloride, 0.05% BSA, 0.02% Proclin300 and 50% glycerol. Store at 4°C for short term. Store at -20°C for long term. Avoid repeated freeze/thaw cycles.**Background:** Microtubule-associated protein involved in membrane protein-cytoskeleton interactions. It is thought to anchor the inhibitory glycine receptor (GLYR) to subsynaptic microtubules.**Applications:** WB (1:500-2000)**IHC-P** (1:100-200)**IHC-F** (1:100-200)**IF** (1:50-200)**ICC/IF** (1:50-200)**Reactivity:** Human (predicted: Mouse, Rat)**Predicted MW.:** 80**Subcellular Location:** Cell membrane ,Cytoplasm

### — VALIDATION IMAGES —



25 ug total protein per lane of various lysates (see on figure) probed with Gephyrin monoclonal antibody, unconjugated (bsm-61891R) at 1:1000 dilution and 4°C overnight incubation. Followed by conjugated secondary antibody incubation at r.t. for 60 min.