

bsm-61880R**[Primary Antibody]**

Sprouty 4 Recombinant Rabbit mAb

BioSS
ANTIBODIES

www.bioss.com.cn

sales@bioss.com.cn

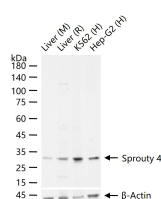
techsupport@bioss.com.cn

400-901-9800

— DATASHEET —

Host: Rabbit**Isotype:** IgG**Clonality:** Recombinant**CloneNo.:** 8E5**GeneID:** 81848**SWISS:** Q9C004**Target:** Sprouty 4**Immunogen:** A synthesized peptide derived from human Sprouty 4: 200-250/299.**Purification:** affinity purified by Protein A**Storage:** 10mM phosphate buffered saline(pH 7.4) with 150mM sodium chloride, 0.05% BSA, 0.02% Proclin300 and 50% glycerol. Store at 4°C for short term. Store at -20°C for long term. Avoid repeated freeze/thaw cycles.**Background:** Suppresses the insulin receptor and EGFR-transduced MAPK signaling pathway, but does not inhibit MAPK activation by a constitutively active mutant Ras. Probably impairs the formation of GTP-Ras. Inhibits Ras-independent, but not Ras-dependent, activation of RAF1.**Applications:** WB (1:500-2000)**Flow-Cyt** (1:50-100)**ICC/IF** (1:50-200)**IP** (1:20-50)**Reactivity:** Human, Mouse, Rat**Predicted
MW.:** 33**Subcellular
Location:** Cytoplasm

— VALIDATION IMAGES —



25 ug total protein per lane of various lysates (see on figure) probed with Sprouty 4 monoclonal antibody, unconjugated (bsm-61880R) at 1:1000 dilution and 4°C overnight incubation. Followed by conjugated secondary antibody incubation at r.t. for 60 min.