

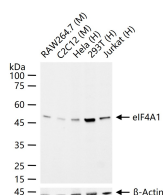
bsm-61878R**[Primary Antibody]****BioSS**
ANTIBODIES

www.bioss.com.cn

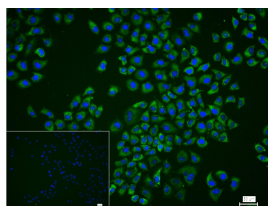
sales@bioss.com.cn

techsupport@bioss.com.cn

400-901-9800

eIF4A1 Recombinant Rabbit mAb**— DATASHEET —****Host:** Rabbit**Isotype:** IgG**Clonality:** Recombinant**CloneNo.:** 8B5**GeneID:** 1973**SWISS:** P60842**Target:** eIF4A1**Applications:** WB (1:500-2000)**ICC/IF** (1:50-200)**Reactivity:** Human, Mouse
(predicted: Rat)**Immunogen:** A synthesized peptide derived from human eIF4A1: 1-48/406.**Purification:** affinity purified by Protein A**Storage:** 10mM phosphate buffered saline(pH 7.4) with 150mM sodium chloride, 0.05% BSA, 0.02% Proclin300 and 50% glycerol. Store at 4°C for short term. Store at -20°C for long term. Avoid repeated freeze/thaw cycles.**Predicted**
MW.: 46**Subcellular** Extracellular matrix
Location: ,Cytoplasm**Background:** ATP-dependent RNA helicase which is a subunit of the eIF4F complex involved in cap recognition and is required for mRNA binding to ribosome. In the current model of translation initiation, eIF4A unwinds RNA secondary structures in the 5'-UTR of mRNAs which is necessary to allow efficient binding of the small ribosomal subunit, and subsequent scanning for the initiator codon.**— VALIDATION IMAGES —**

25 ug total protein per lane of various lysates (see on figure) probed with eIF4A1 monoclonal antibody, unconjugated (bsm-61878R) at 1:1000 dilution and 4°C overnight incubation. Followed by conjugated secondary antibody incubation at r.t. for 60 min.



4% Paraformaldehyde-fixed Hela (H) cell; Triton X-100 at r.t. for 20 min; Antibody incubation with (eIF4A1) monoclonal Antibody, unconjugated (bsm-61878R) 1:100, 90 min at 37°C; followed by conjugated Goat Anti-Rabbit IgG antibody (green, bs-40295G-FITC) at 37°C for 90 min, DAPI (blue, C02-04002) was used to stain the cell nuclei. PBS instead of the primary antibody was used as the blank control.