

**bsm-61877R****[ Primary Antibody ]****DNA Ligase 1 Recombinant Rabbit mAb****Bioss**  
**ANTIBODIES**

www.bioss.com.cn

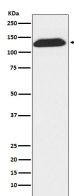
sales@bioss.com.cn

techsupport@bioss.com.cn

400-901-9800

**— DATASHEET —**

<b>Host:</b> Rabbit	<b>Isotype:</b> IgG	<b>Applications:</b> <b>WB</b> (1:1000-2000) <b>IHC-P</b> (1:100-200) <b>IHC-F</b> (1:100-200) <b>IF</b> (1:50-200) <b>ICC/IF</b> (1:50-200)  <b>Reactivity:</b> Human, Rat   <b>Predicted MW.:</b> 102  <b>Subcellular Location:</b> Nucleus
<b>Clonality:</b> Recombinant		
<b>GeneID:</b> 3978	<b>SWISS:</b> P18858	
<b>Target:</b> DNA Ligase 1		
<b>Immunogen:</b> A synthesized peptide derived from human LIG1: 30-85/919.		
<b>Purification:</b> affinity purified by Protein A		
<b>Storage:</b> 10mM phosphate buffered saline(pH 7.4) with 150mM sodium chloride, 0.05% BSA, 0.02% Proclin300 and 50% glycerol. Store at 4°C for short term. Store at -20°C for long term. Avoid repeated freeze/thaw cycles.		
<b>Background:</b> DNA ligase that seals nicks in double-stranded during DNA repair. Also involved in DNA replication and DNA recombination.		

**— VALIDATION IMAGES —**

Western blot analysis of Molt4 cell lysate. Using DNA Ligase 1 (bsm-61877R) monoclonal antibody at 1:1000 dilution and 4°C overnight incubation. Followed by conjugated secondary antibody incubation at r.t. for 60 min.