

**bsm-61875R****[ Primary Antibody ]****SMARCC1 Recombinant Rabbit mAb****BioSS**  
**ANTIBODIES**

www.bioss.com.cn

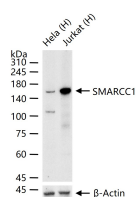
sales@bioss.com.cn

techsupport@bioss.com.cn

400-901-9800

**— DATASHEET —**

<b>Host:</b> Rabbit	<b>Isotype:</b> IgG	<b>Applications:</b> <b>WB</b> (1:500-2000) <b>Flow-Cyt</b> (1:50-100) <b>ICC/IF</b> (1:50-200) <b>IP</b> (1:20-50)
<b>Clonality:</b> Recombinant		
<b>GeneID:</b> 6599	<b>SWISS:</b> Q92922	
<b>Target:</b> SMARCC1		<b>Reactivity:</b> Human (predicted: Rat)
<b>Immunogen:</b> A synthesized peptide derived from human SMARCC1: 700-750/1105.		
<b>Purification:</b> affinity purified by Protein A		
<b>Storage:</b> 10mM phosphate buffered saline(pH 7.4) with 150mM sodium chloride, 0.05% BSA, 0.02% Proclin300 and 50% glycerol. Store at 4°C for short term. Store at -20°C for long term. Avoid repeated freeze/thaw cycles.		<b>Predicted MW.:</b> 123
<b>Background:</b> Involved in transcriptional activation and repression of select genes by chromatin remodeling (alteration of DNA-nucleosome topology). Component of SWI/SNF chromatin remodeling complexes that carry out key enzymatic activities, changing chromatin structure by altering DNA-histone contacts within a nucleosome in an ATP-dependent manner. May stimulate the ATPase activity of the catalytic subunit of the complex.		<b>Subcellular Location:</b> Nucleus

**— VALIDATION IMAGES —**

25 ug total protein per lane of various lysates (see on figure) probed with SMARCC1 monoclonal antibody, unconjugated (bsm-61875R) at 1:1000 dilution and 4°C overnight incubation. Followed by conjugated secondary antibody incubation at r.t. for 60 min.