

bsm-61872R**[Primary Antibody]****NEDD5/septin 2 Recombinant Rabbit mAb****BioSS**
ANTIBODIES

www.bioss.com.cn

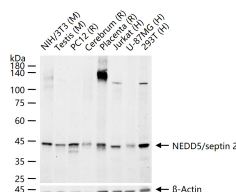
sales@bioss.com.cn

techsupport@bioss.com.cn

400-901-9800

— DATASHEET —

Host: Rabbit	Isotype: IgG	Applications: WB (1:500-2000) IHC-P (1:100-200) IHC-F (1:100-200) IF (1:50-200) Flow-Cyt (1:50-100) ICC/IF (1:50-200) IP (1:20-50)
Clonality: Recombinant		
GeneID: 4735	SWISS: Q15019	
Target: NEDD5/septin 2		
Immunogen: A synthesized peptide derived from human Septin 2: 250-300/361.		
Purification: affinity purified by Protein A		Reactivity: Human, Mouse, Rat
Storage: 10mM phosphate buffered saline(pH 7.4) with 150mM sodium chloride, 0.05% BSA, 0.02% Proclin300 and 50% glycerol. Store at 4°C for short term. Store at -20°C for long term. Avoid repeated freeze/thaw cycles.		
Background: Filament-forming cytoskeletal GTPase. Forms a filamentous structure with SEPTIN12, SEPTIN6, SEPTIN2 and probably SEPTIN4 at the sperm annulus which is required for the structural integrity and motility of the sperm tail during postmeiotic differentiation		Predicted MW.: 41 Subcellular Location: Cytoplasm ,Nucleus

— VALIDATION IMAGES —

25 ug total protein per lane of various lysates (see on figure) probed with NEDD5/septin 2 monoclonal antibody, unconjugated (bsm-61872R) at 1:1000 dilution and 4°C overnight incubation. Followed by conjugated secondary antibody incubation at r.t. for 60 min.