

bsm-61869R**[Primary Antibody]**

MAPRE3 Recombinant Rabbit mAb

BioSS
ANTIBODIES

www.bioss.com.cn

sales@bioss.com.cn

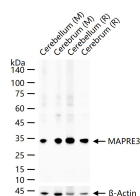
techsupport@bioss.com.cn

400-901-9800

— DATASHEET —

Host: Rabbit**Isotype:** IgG**Clonality:** Recombinant**GeneID:** 22924**SWISS:** Q9UPY8**Target:** MAPRE3**Immunogen:** A synthesized peptide derived from human MAPRE3: 220-281/281.**Purification:** affinity purified by Protein A**Storage:** 10mM phosphate buffered saline(pH 7.4) with 150mM sodium chloride, 0.05% BSA, 0.02% Proclin300 and 50% glycerol. Store at 4°C for short term. Store at -20°C for long term. Avoid repeated freeze/thaw cycles.**Background:** Plus-end tracking protein (+TIP) that binds to the plus-end of microtubules and regulates the dynamics of the microtubule cytoskeleton. Promotes microtubule growth. May be involved in spindle function by stabilizing microtubules and anchoring them at centrosomes.**Applications:** WB (1:500-2000)**IHC-P** (1:100-200)**IHC-F** (1:100-200)**IF** (1:50-200)**Flow-Cyt** (1:50-100)**ICC/IF** (1:50-200)**Reactivity:** Mouse, Rat
(predicted: Human)**Predicted MW.:** 32

— VALIDATION IMAGES —



25 ug total protein per lane of various lysates (see on figure) probed with MAPRE3 monoclonal antibody, unconjugated (bsm-61869R) at 1:1000 dilution and 4°C overnight incubation. Followed by conjugated secondary antibody incubation at r.t. for 60 min.