

bsm-61867R**[Primary Antibody]****ILF2 Recombinant Rabbit mAb****Bioss**
ANTIBODIES

www.bioss.com.cn

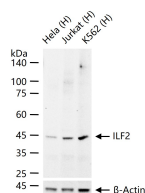
sales@bioss.com.cn

techsupport@bioss.com.cn

400-901-9800

— DATASHEET —

| | | |
|--|----------------------|---|
| Host: Rabbit | Isotype: IgG | Applications: WB (1:500-2000) IHC-P (1:100-200) IHC-F (1:100-200) IF (1:100-200) Flow-Cyt (1:50-100) IP (1:20-50) Reactivity: Human (predicted: Mouse, Rat) Predicted MW.: 43 Subcellular Location: Nucleus |
| Clonality: Recombinant | | |
| GeneID: 3608 | SWISS: Q12905 | |
| Target: ILF2 | | |
| Immunogen: A synthesized peptide derived from human ILF2: 241-299/390. | | |
| Purification: affinity purified by Protein A | | |
| Storage: 10mM phosphate buffered saline(pH 7.4) with 150mM sodium chloride, 0.05% BSA, 0.02% Proclin300 and 50% glycerol. Store at 4°C for short term. Store at -20°C for long term. Avoid repeated freeze/thaw cycles. | | |
| Background: Appears to function predominantly as a heterodimeric complex with ILF3. This complex may regulate transcription of the IL2 gene during T-cell activation. It can also promote the formation of stable DNA-dependent protein kinase holoenzyme complexes on DNA. | | |

— VALIDATION IMAGES —

25 ug total protein per lane of various lysates (see on figure) probed with ILF2 monoclonal antibody, unconjugated (bsm-61867R) at 1:1000 dilution and 4°C overnight incubation. Followed by conjugated secondary antibody incubation at r.t. for 60 min.