

**bsm-61866R****[ Primary Antibody ]**

www.bioss.com.cn

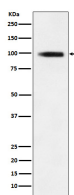
sales@bioss.com.cn

techsupport@bioss.com.cn

400-901-9800

**GIT1 Recombinant Rabbit mAb****— DATASHEET —**

<b>Host:</b> Rabbit	<b>Isotype:</b> IgG	<b>Applications:</b> <b>WB</b> (1:500-2000) <b>Flow-Cyt</b> (1:50-100)
<b>Clonality:</b> Recombinant		<b>Reactivity:</b> Human, Mouse, Rat
<b>GeneID:</b> 28964	<b>SWISS:</b> Q9Y2X7	
<b>Target:</b> GIT1		
<b>Immunogen:</b> A synthesized peptide derived from human GIT1: 150-200/761.		
<b>Purification:</b> affinity purified by Protein A		<b>Predicted MW.:</b> 84
<b>Storage:</b> 10mM phosphate buffered saline(pH 7.4) with 150mM sodium chloride, 0.05% BSA, 0.02% Proclin300 and 50% glycerol. Store at 4°C for short term. Store at -20°C for long term. Avoid repeated freeze/thaw cycles.		<b>Subcellular Location:</b> Cell membrane ,Cytoplasm
<b>Background:</b> GTPase-activating protein for ADP ribosylation factor family members, including ARF1. Multidomain scaffold protein that interacts with numerous proteins and therefore participates in many cellular functions, including receptor internalization, focal adhesion remodeling, and signaling by both G protein-coupled receptors and tyrosine kinase receptors. Through PAK1 activation, positively regulates microtubule nucleation during interphase.		

**— VALIDATION IMAGES —**

Western blot analysis of 293T cell lysate. Using GIT1 (bsm-61866R) monoclonal antibody at 1:1000 dilution and 4°C overnight incubation. Followed by conjugated secondary antibody incubation at r.t. for 60 min.