

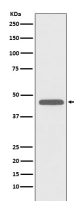
**bsm-61862R****[ Primary Antibody ]****Bioss**  
ANTIBODIES

www.bioss.com.cn

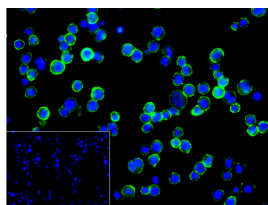
sales@bioss.com.cn

techsupport@bioss.com.cn

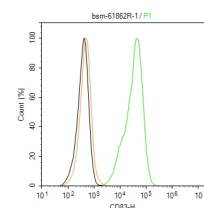
400-901-9800

**CD83 Recombinant Rabbit mAb****— DATASHEET —****Host:** Rabbit**Isotype:** IgG**Clonality:** Recombinant**GeneID:** 9308**SWISS:** Q01151**Target:** CD83**Immunogen:** A synthesized peptide derived from human CD83: 50-95/205.**Purification:** affinity purified by Protein A**Storage:** 10mM phosphate buffered saline(pH 7.4) with 150mM sodium chloride, 0.05% BSA, 0.02% Proclin300 and 50% glycerol. Store at 4°C for short term. Store at -20°C for long term. Avoid repeated freeze/thaw cycles.**Background:** May play a significant role in antigen presentation or the cellular interactions that follow lymphocyte activation.**Applications:** WB (1:1000-2000)**Flow-Cyt** (1:50-100)**ICC/IF** (1:100-500)**Reactivity:** Human, Mouse, Rat**Predicted  
MW.:** 23**Subcellular  
Location:** Cell membrane**— VALIDATION IMAGES —**

Western blot analysis of MOLT4 cell lysate. Using CD83 (bsm-61862R) monoclonal antibody at 1:1000 dilution and 4°C overnight incubation. Followed by conjugated secondary antibody incubation at r.t. for 60 min.



4% Paraformaldehyde-fixed Raji (H) cell; Antibody incubation with (CD83) monoclonal Antibody, unconjugated (bsm-61862R) 1:100, 90 min at 37°C; followed by conjugated Goat Anti-Rabbit IgG antibody (green, bs-60295G-BF488) at 37°C for 90 min, DAPI (blue, C02-04002) was used to stain the cell nuclei. PBS instead of the primary antibody was used as the blank control.



The Raji (H) cells were incubated in 5%BSA to block non-specific protein-protein interactions (30 min at r.t.), followed by secondary antibody incubation for 40 min at room temperature. Primary Antibody (green): Rabbit Anti-CD83 antibody (bs-61862R,1:100); Isotype Control (orange): Rabbit IgG (bs-0295P). Blank control (black): PBS. Acquisition of 20,000 events was performed.