

bsm-61861R**[Primary Antibody]****CEACAM8 Recombinant Rabbit mAb****Bioss**
ANTIBODIES

www.bioss.com.cn

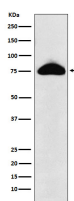
sales@bioss.com.cn

techsupport@bioss.com.cn

400-901-9800

— DATASHEET —

| | | |
|--|----------------------|--|
| Host: Rabbit | Isotype: IgG | Applications: WB (1:500-2000) |
| Clonality: Recombinant | | Reactivity: Human |
| GeneID: 1088 | SWISS: P31997 | |
| Target: CEACAM8 | | |
| Immunogen: A synthesized peptide derived from human CEACAM8: 220-278/349. | | Predicted MW.: 38 |
| Purification: affinity purified by Protein A | | Subcellular Location: Cell membrane |
| Storage: 10mM phosphate buffered saline(pH 7.4) with 150mM sodium chloride, 0.05% BSA, 0.02% Proclin300 and 50% glycerol. Store at 4°C for short term. Store at -20°C for long term. Avoid repeated freeze/thaw cycles. | | |
| Background: Expressed in leukocytes of chronic myeloid Leukemia patients and bone marrow. | | |

— VALIDATION IMAGES —

Western blot analysis of Human plasma lysate.
Using CEACAM8 (bsm-61861R) monoclonal antibody at 1:1000 dilution and 4°C overnight incubation. Followed by conjugated secondary antibody incubation at r.t. for 60 min.