

**bsm-61860R****[ Primary Antibody ]****Bioss**  
**ANTIBODIES**

www.bioss.com.cn

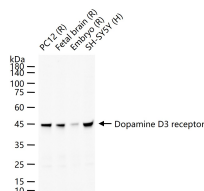
sales@bioss.com.cn

techsupport@bioss.com.cn

400-901-9800

**Dopamine D3 receptor Recombinant Rabbit mAb****— DATASHEET —**

<b>Host:</b> Rabbit	<b>Isotype:</b> IgG	<b>Applications:</b> WB (1:500-2000)
<b>Clonality:</b> Recombinant	<b>CloneNo.:</b> 2C2	<b>Reactivity:</b> Human, Rat (predicted: Mouse)
<b>GeneID:</b> 1814	<b>SWISS:</b> P35462	<b>Predicted MW.:</b> 44
<b>Target:</b> Dopamine D3 receptor		<b>Subcellular Location:</b> Cell membrane ,Cytoplasm
<b>Immunogen:</b> A synthesized peptide derived from human DRD3: 1-50/400.		
<b>Purification:</b> affinity purified by Protein A		
<b>Storage:</b> 10mM phosphate buffered saline(pH 7.4) with 150mM sodium chloride, 0.05% BSA, 0.02% Proclin300 and 50% glycerol. Store at 4°C for short term. Store at -20°C for long term. Avoid repeated freeze/thaw cycles.		
<b>Background:</b> Dopamine receptor whose activity is mediated by G proteins which inhibit adenylyl cyclase. Promotes cell proliferation.		

**— VALIDATION IMAGES —**

25 ug total protein per lane of various lysates (see on figure) probed with Dopamine D3 receptor monoclonal antibody, unconjugated (bsm-61860R) at 1:1000 dilution and 4°C overnight incubation. Followed by conjugated secondary antibody incubation at r.t. for 60 min.