

bsm-61858R**[Primary Antibody]**

Integrin alpha 9 Recombinant Rabbit mAb

Bioss
ANTIBODIES

www.bioss.com.cn

sales@bioss.com.cn

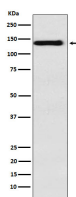
techsupport@bioss.com.cn

400-901-9800

— DATASHEET —

Host: Rabbit	Isotype: IgG	Applications: WB (1:500-2000) IHC-P (1:50-200) IHC-F (1:50-200) IF (1:50-200) Reactivity: Human, Mouse, Rat Predicted MW.: 114 Subcellular Location: Cell membrane ,Cytoplasm
Clonality: Recombinant		
GeneID: 3680	SWISS: P05556	
Target: Integrin alpha 9		
Immunogen: A synthesized peptide derived from human Integrin alpha 9: 1-70/1035.		
Purification: affinity purified by Protein A		
Storage: 10mM phosphate buffered saline(pH 7.4) with 150mM sodium chloride, 0.05% BSA, 0.02% Proclin300 and 50% glycerol. Store at 4°C for short term. Store at -20°C for long term. Avoid repeated freeze/thaw cycles.		
Background: Integrin alpha-9/beta-1 is a receptor for VCAM1, cytotactin and osteopontin. It recognizes the sequence A-E-I-D-G-I-E-L in cytotactin.		

— VALIDATION IMAGES —



Western blot analysis of HepG2 cell lysate. Using Integrin alpha 9 (bsm-61858R) monoclonal antibody at 1:1000 dilution and 4°C overnight incubation. Followed by conjugated secondary antibody incubation at r.t. for 60 min.