

bsm-61855R**[Primary Antibody]**

Glutathione synthetase Recombinant Rabbit mAb

BioSS
ANTIBODIES

www.bioss.com.cn

sales@bioss.com.cn

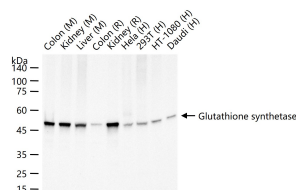
techsupport@bioss.com.cn

400-901-9800

DATASHEET

Host: Rabbit**Isotype:** IgG**Clonality:** Recombinant**CloneNo.:** 3H3**GeneID:** 2937**SWISS:** P48637**Target:** Glutathione synthetase**Immunogen:** A synthesized peptide derived from human GSS: 321-400.**Purification:** affinity purified by Protein A**Storage:** 10mM phosphate buffered saline(pH 7.4) with 150mM sodium chloride, 0.05% BSA, 0.02% Proclin300 and 50% glycerol. Store at 4°C for short term. Store at -20°C for long term. Avoid repeated freeze/thaw cycles.**Background:** Catalyzes the production of glutathione from gamma-glutamylcysteine and glycine in an ATP-dependent manner. Glutathione (gamma-glutamylcysteinylglycine, GSH) is the most abundant intracellular thiol in living aerobic cells and is required for numerous processes including the protection of cells against oxidative damage, amino acid transport, the detoxification of foreign compounds, the maintenance of protein sulfhydryl groups in a reduced state and acts as a cofactor for a number of enzymes.**Applications:** WB (1:500-2000)**Flow-Cyt** (1:50-100)**ICC/IF** (1:50-200)**Reactivity:** Human, Mouse, Rat**Predicted
MW.:** 52**Subcellular
Location:** Cytoplasm

VALIDATION IMAGES



25 ug total protein per lane of various lysates (see on figure) probed with Glutathione synthetase monoclonal antibody, unconjugated (bsm-61855R) at 1:1000 dilution and 4°C overnight incubation. Followed by conjugated secondary antibody incubation at r.t. for 60 min.