

**bsm-61848R****[ Primary Antibody ]**

www.bioss.com.cn

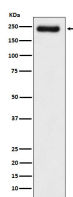
sales@bioss.com.cn

techsupport@bioss.com.cn

400-901-9800

**LAMC1 Recombinant Rabbit mAb****— DATASHEET —**

<b>Host:</b> Rabbit	<b>Isotype:</b> IgG	<b>Applications:</b> <b>WB</b> (1:500-2000) <b>Flow-Cyt</b> (1:50-100)
<b>Clonality:</b> Recombinant		<b>Reactivity:</b> Human
<b>GeneID:</b> 3915	<b>SWISS:</b> P11047	
<b>Target:</b> LAMC1		
<b>Immunogen:</b> A synthesized peptide derived from human Laminin gamma 1: 10-75/1609.		<b>Predicted MW.:</b> 178
<b>Purification:</b> affinity purified by Protein A		<b>Subcellular Location:</b> Secreted ,Extracellular matrix ,Cell membrane
<b>Storage:</b> 10mM phosphate buffered saline(pH 7.4) with 150mM sodium chloride, 0.05% BSA, 0.02% Proclin300 and 50% glycerol. Store at 4°C for short term. Store at -20°C for long term. Avoid repeated freeze/thaw cycles.		
<b>Background:</b> Binding to cells via a high affinity receptor, laminin is thought to mediate the attachment, migration and organization of cells into tissues during embryonic development by interacting with other extracellular matrix components.		

**— VALIDATION IMAGES —**

Western blot analysis of A431 cell lysate. Using LAMC1 (bsm-61848R) monoclonal antibody at 1:1000 dilution and 4°C overnight incubation. Followed by conjugated secondary antibody incubation at r.t. for 60 min.