

bsm-61841R**[Primary Antibody]****PDE4D Recombinant Rabbit mAb****Bioss**
ANTIBODIES

www.bioss.com.cn

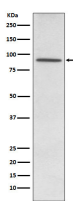
sales@bioss.com.cn

techsupport@bioss.com.cn

400-901-9800

— DATASHEET —

Host: Rabbit	Isotype: IgG	Applications: WB (1:500-2000)
Clonality: Recombinant		Reactivity: Human
GeneID: 5144	SWISS: Q08499	
Target: PDE4D		
Immunogen: A synthesized peptide derived from human PDE4D: 650-809/809.		Predicted MW.: 91
Purification: affinity purified by Protein A		Subcellular Location: Cell membrane ,Cytoplasm
Storage: 10mM phosphate buffered saline(pH 7.4) with 150mM sodium chloride, 0.05% BSA, 0.02% Proclin300 and 50% glycerol. Store at 4°C for short term. Store at -20°C for long term. Avoid repeated freeze/thaw cycles.		
Background: Hydrolyzes the second messenger cAMP, which is a key regulator of many important physiological processes.		

— VALIDATION IMAGES —

Western blot analysis of K562 cell lysate. Using PDE4D (bsm-61841R) monoclonal antibody at 1:1000 dilution and 4°C overnight incubation. Followed by conjugated secondary antibody incubation at r.t. for 60 min.