

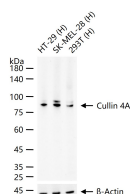
**bsm-61837R****[ Primary Antibody ]****Cullin 4A Recombinant Rabbit mAb****Bioss**  
ANTIBODIES

www.bioss.com.cn

sales@bioss.com.cn

techsupport@bioss.com.cn

400-901-9800

**DATASHEET****Host:** Rabbit**Isotype:** IgG**Clonality:** Recombinant**GeneID:** 8451**SWISS:** Q13619**Target:** Cullin 4A**Immunogen:** A synthesized peptide derived from human Cullin 4A: 700-759/759.**Purification:** affinity purified by Protein A**Storage:** 10mM phosphate buffered saline(pH 7.4) with 150mM sodium chloride, 0.05% BSA, 0.02% Proclin300 and 50% glycerol. Store at 4°C for short term. Store at -20°C for long term. Avoid repeated freeze/thaw cycles.**Background:** Core component of multiple cullin-RING-based E3 ubiquitin-protein ligase complexes which mediate the ubiquitination of target proteins.**Applications:** WB (1:500-2000)**IHC-P** (1:100-200)**IHC-F** (1:100-200)**IF** (1:50-200)**Flow-Cyt** (1:50-100)**ICC/IF** (1:50-200)**IP** (1:20-50)**Reactivity:** Human**Predicted  
MW.:** 88**Subcellular  
Location:** Nucleus**VALIDATION IMAGES**

25 ug total protein per lane of various lysates (see on figure) probed with Cullin 4A monoclonal antibody, unconjugated (bsm-61837R) at 1:1000 dilution and 4°C overnight incubation. Followed by conjugated secondary antibody incubation at r.t. for 60 min.