

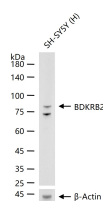
**bsm-61836R****[ Primary Antibody ]****BDKRB2 Recombinant Rabbit mAb****BioSS**  
**ANTIBODIES**

www.bioss.com.cn

sales@bioss.com.cn

techsupport@bioss.com.cn

400-901-9800

**— DATASHEET —****Host:** Rabbit**Isotype:** IgG**Clonality:** Recombinant**CloneNo.:** 4D8**GeneID:** 624**SWISS:** P30411**Target:** BDKRB2**Immunogen:** A synthesized peptide derived from human B2R: 302-391.**Purification:** affinity purified by Protein A**Storage:** 10mM phosphate buffered saline(pH 7.4) with 150mM sodium chloride, 0.05% BSA, 0.02% Proclin300 and 50% glycerol.  
Store at 4°C for short term. Store at -20°C for long term. Avoid repeated freeze/thaw cycles.**Background:** Receptor for bradykinin. It is associated with G proteins that activate a phosphatidylinositol-calcium second messenger system.**Applications:** **WB** (1:500-2000)  
**IP** (1:20-50)**Reactivity:** Human (predicted: Mouse)**Predicted  
MW.:** 44**Subcellular  
Location:** Cell membrane**— VALIDATION IMAGES —**

25 ug total protein per lane of various lysates (see on figure) probed with BDKRB2 monoclonal antibody, unconjugated (bsm-61836R) at 1:2000 dilution and 4°C overnight incubation. Followed by conjugated secondary antibody incubation at r.t. for 60 min.