

**bsm-61833R****[ Primary Antibody ]****Bioss**  
ANTIBODIES

www.bioss.com.cn

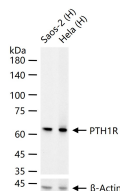
sales@bioss.com.cn

techsupport@bioss.com.cn

400-901-9800

**PTH1R Recombinant Rabbit mAb****— DATASHEET —**

<b>Host:</b> Rabbit	<b>Isotype:</b> IgG	<b>Applications:</b> <b>WB</b> (1:500-2000) <b>IP</b> (1:20-50)
<b>Clonality:</b> Recombinant		<b>Reactivity:</b> Human
<b>GeneID:</b> 5745	<b>SWISS:</b> Q03431	
<b>Target:</b> PTH1R		
<b>Immunogen:</b> A synthesized peptide derived from human PTH1R: 50-200/593.		
<b>Purification:</b> affinity purified by Protein A		
<b>Storage:</b> 10mM phosphate buffered saline(pH 7.4) with 150mM sodium chloride, 0.05% BSA, 0.02% Proclin300 and 50% glycerol. Store at 4°C for short term. Store at -20°C for long term. Avoid repeated freeze/thaw cycles.		<b>Predicted MW.:</b> 66
<b>Background:</b> Receptor for parathyroid hormone and for parathyroid hormone-related peptide. The activity of this receptor is mediated by G proteins which activate adenylyl cyclase and also a phosphatidylinositol-calcium second messenger system.		<b>Subcellular Location:</b> Secreted

**— VALIDATION IMAGES —**

25 ug total protein per lane of various lysates (see on figure) probed with PTH1R monoclonal antibody, unconjugated (bsm-61833R) at 1:1000 dilution and 4°C overnight incubation. Followed by conjugated secondary antibody incubation at r.t. for 60 min.