

bsm-61831R**[Primary Antibody]****BioSS**
ANTIBODIES

www.bioss.com.cn

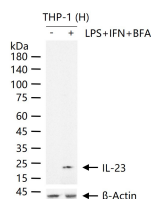
sales@bioss.com.cn

techsupport@bioss.com.cn

400-901-9800

IL-23 Recombinant Rabbit mAb**— DATASHEET —**

Host: Rabbit	Isotype: IgG	Applications: WB (1:500-2000) Reactivity: Human Predicted MW.: 21 Subcellular Location: Secreted
Clonality: Recombinant	CloneNo.: 6D6	
GeneID: 51561	SWISS: Q9NPF7	
Target: IL-23		
Immunogen: A synthesized peptide derived from human IL 23A: 118-189.		
Purification: affinity purified by Protein A		
Storage: 10mM phosphate buffered saline(pH 7.4) with 150mM sodium chloride, 0.05% BSA, 0.02% Proclin300 and 50% glycerol. Store at 4°C for short term. Store at -20°C for long term. Avoid repeated freeze/thaw cycles.		
Background: Associates with IL12B to form the pro-inflammatory cytokine IL-23 that plays different roles in innate and adaptive immunity. Released by antigen-presenting cells such as dendritic cells or macrophages, binds to a heterodimeric receptor complex composed of IL12RB1 and IL23R to activate JAK2 and TYK2 which then phosphorylate the receptor to form a docking site leading to the phosphorylation of STAT3 and STAT4.		

— VALIDATION IMAGES —

THP-1 (H) cells were treated with or without LPS and IFN (40ng/mL) for 24 h, BFA (300ng/mL) for 24 h, 25 µg total protein per lane of cell lysates (see on figure) probed with IL-23 polyclonal antibody, unconjugated (bsm-61831R) at 1:1000 dilution and 4°C overnight incubation. Followed by conjugated secondary antibody incubation at r.t. for 60 min.