

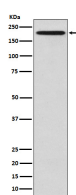
**bsm-61825R****[ Primary Antibody ]****EIF2AK4/GCN2 Recombinant Rabbit mAb****BioSS**  
**ANTIBODIES**

www.bioss.com.cn

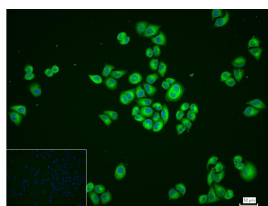
sales@bioss.com.cn

techsupport@bioss.com.cn

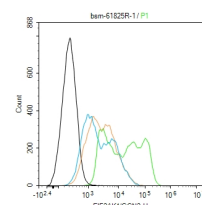
400-901-9800

**— DATASHEET —****Host:** Rabbit**Isotype:** IgG**Clonality:** Recombinant**CloneNo.:** 11H4**GeneID:** 440275**SWISS:** Q9P2K8**Target:** EIF2AK4/GCN2**Immunogen:** A synthesized peptide derived from human GCN2: 1-59/1649.**Purification:** affinity purified by Protein A**Storage:** 10mM phosphate buffered saline(pH 7.4) with 150mM sodium chloride, 0.05% BSA, 0.02% Proclin300 and 50% glycerol. Store at 4°C for short term. Store at -20°C for long term. Avoid repeated freeze/thaw cycles.**Background:** Metabolic-stress sensing protein kinase that phosphorylates the alpha subunit of eukaryotic translation initiation factor 2 (EIF2S1/eIF-2-alpha) in response to low amino acid availability. Plays a role as an activator of the integrated stress response (ISR) required for adaptation to amino acid starvation.**Applications:** **WB** (1:1000-2000)  
**IHC-P** (1:100-200)  
**IHC-F** (1:100-200)  
**IF** (1:50-200)  
**Flow-Cyt** (1ug/Test)  
**ICC/IF** (1:50-200)**Reactivity:** Human**Predicted**  
**MW.:** 187**Subcellular**  
**Location:** Cytoplasm**— VALIDATION IMAGES —**

Western blot analysis of HeLa cell lysate. Using EIF2AK4/GCN2 (bsm-61825R) monoclonal antibody at 1:1000 dilution and 4°C overnight incubation. Followed by conjugated secondary antibody incubation at r.t. for 60 min.



4% Paraformaldehyde-fixed HeLa (H) cell; Triton X-100 at r.t. for 20 min; Antibody incubation with (EIF2AK4/GCN2) monoclonal Antibody, unconjugated (bsm-61825R) 1:100, 90 min at 37°C; followed by conjugated Goat Anti-Rabbit IgG antibody (green, bs-40295G-FITC) at 37°C for 90 min, DAPI (blue, C02-04002) was used to stain the cell nuclei. PBS instead of the primary antibody was used as the blank control.



The HeLa (H) cells were fixed with 4% PFA (10 min at r.t.) and then permeabilized with 90% ice-cold methanol for 20 min at -20°C, the cells then were incubated in 5% BSA to block non-specific protein-protein interactions (30 min at r.t.). Primary Antibody (green): Rabbit Anti-EIF2AK4/GCN2 antibody (bsm-61825R): 1 µg/10<sup>6</sup> cells; Secondary Antibody (white blue): Goat anti-Rabbit IgG-FITC (bs-40295G-FITC): 1 µg/test. Isotype Control (orange): Rabbit IgG (bs-0295P). Blank control (black): PBS. Acquisition of 20,000 events was performed.