

**bsm-61824R****[ Primary Antibody ]****PKC theta Recombinant Rabbit mAb****BioSS**  
**ANTIBODIES**

www.bioss.com.cn

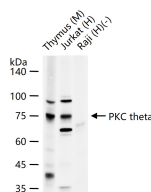
sales@bioss.com.cn

techsupport@bioss.com.cn

400-901-9800

**— DATASHEET —**

<b>Host:</b> Rabbit	<b>Isotype:</b> IgG	<b>Applications:</b> WB (1:500-2000)
<b>Clonality:</b> Recombinant	<b>CloneNo.:</b> 7H5	<b>Reactivity:</b> Human, Mouse (predicted: Rat)
<b>GeneID:</b> 5588	<b>SWISS:</b> Q04759	<b>Predicted MW.:</b> 82
<b>Target:</b> PKC theta		<b>Subcellular Location:</b> Cell membrane ,Cytoplasm
<b>Immunogen:</b> A synthesized peptide derived from human PKC theta: 600-650.		
<b>Purification:</b> affinity purified by Protein A		
<b>Storage:</b> 10mM phosphate buffered saline(pH 7.4) with 150mM sodium chloride, 0.05% BSA, 0.02% Proclin300 and 50% glycerol. Store at 4°C for short term. Store at -20°C for long term. Avoid repeated freeze/thaw cycles.		
<b>Background:</b> Protein kinase C (PKC) is a family of serine- and threonine-specific protein kinases that can be activated by calcium and the second messenger diacylglycerol. PKC family members phosphorylate a wide variety of protein targets and are known to be involved in diverse cellular signaling pathways. PKC family members also serve as major receptors for phorbol esters, a class of tumor promoters.		

**— VALIDATION IMAGES —**

25 ug total protein per lane of various lysates  
(see on figure) probed with PKC theta  
monoclonal antibody, unconjugated  
(bsm-61824R) at 1:2000 dilution and 4°C  
overnight incubation. Followed by conjugated  
secondary antibody incubation at r.t. for 60 min.