

bsm-61819R**[Primary Antibody]****phospho-GCN2 (Thr899) Recombinant Rabbit mAb****Bioss**
ANTIBODIES

www.bioss.com.cn

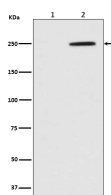
sales@bioss.com.cn

techsupport@bioss.com.cn

400-901-9800

— DATASHEET —

Host: Rabbit	Isotype: IgG	Applications: WB (1:1000-2000)
Clonality: Recombinant		Reactivity: Human
GeneID: 440275	SWISS: Q9P2K8	
Target: GCN2 (Thr899)		
Immunogen: A synthesized peptide derived from human GCN2 around the phosphorylation site of T899: GHLP-T-GM(全长1649aa).		Predicted MW.: 187
Purification: affinity purified by Protein A		Subcellular Location: Cytoplasm
Storage: 10mM phosphate buffered saline(pH 7.4) with 150mM sodium chloride, 0.05% BSA, 0.02% Proclin300 and 50% glycerol. Store at 4°C for short term. Store at -20°C for long term. Avoid repeated freeze/thaw cycles.		
Background: Metabolic-stress sensing protein kinase that phosphorylates the alpha subunit of eukaryotic translation initiation factor 2 (EIF2S1/eIF-2-alpha) in response to low amino acid availability. Plays a role as an activator of the integrated stress response (ISR) required for adaptation to amino acid starvation.		

— VALIDATION IMAGES —

Western blot analysis of (1) HeLa cell lysate; (2) HeLa cell lysate treated with Calyculin. Using Phospho-GCN2 (Thr899) (bsm-61819R) monoclonal antibody at 1:1000 dilution and 4°C overnight incubation. Followed by conjugated secondary antibody incubation at r.t. for 60 min.