

**bsm-61817R****[ Primary Antibody ]****CORD2/OTX3 Recombinant Rabbit mAb****Bioss**  
**ANTIBODIES**

www.bioss.com.cn

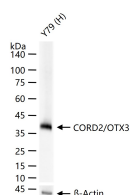
sales@bioss.com.cn

techsupport@bioss.com.cn

400-901-9800

**— DATASHEET —**

<b>Host:</b> Rabbit	<b>Isotype:</b> IgG	<b>Applications:</b> WB (1:500-2000) <b>IHC-P</b> (1:100-200) <b>IHC-F</b> (1:100-200) <b>IF</b> (1:100-200)  <b>Reactivity:</b> Human   <b>Predicted MW.:</b> 32  <b>Subcellular Location:</b> Nucleus
<b>Clonality:</b> Recombinant	<b>CloneNo.:</b> 8E5	
<b>GeneID:</b> 1406	<b>SWISS:</b> O43186	
<b>Target:</b> CORD2/OTX3		
<b>Immunogen:</b> A synthesized peptide derived from human Cone rod homeobox protein: 250-299.		
<b>Purification:</b> affinity purified by Protein A		
<b>Storage:</b> 10mM phosphate buffered saline(pH 7.4) with 150mM sodium chloride, 0.05% BSA, 0.02% Proclin300 and 50% glycerol. Store at 4°C for short term. Store at -20°C for long term. Avoid repeated freeze/thaw cycles.		
<b>Background:</b> Transcription factor that binds and transactivates the sequence 5'-TAATC[CA]-3' which is found upstream of several photoreceptor-specific genes, including the opsin genes. Acts synergistically with other transcription factors, such as NRL, RORB and RAX, to regulate photoreceptor cell-specific gene transcription. Essential for the maintenance of mammalian photoreceptors.		

**— VALIDATION IMAGES —**

25 ug total protein per lane of various lysates (see on figure) probed with CORD2/OTX3 monoclonal antibody, unconjugated (bsm-61817R) at 1:1000 dilution and 4°C overnight incubation. Followed by conjugated secondary antibody incubation at r.t. for 60 min.