

**bsm-61814R****[ Primary Antibody ]**

## Nkx2.2 Recombinant Rabbit mAb

**BioSS**  
**ANTIBODIES**

www.bioss.com.cn

sales@bioss.com.cn

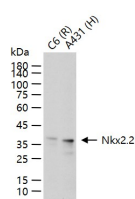
techsupport@bioss.com.cn

400-901-9800

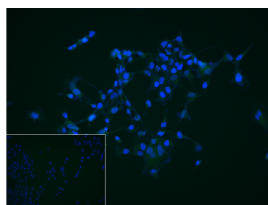
### — DATASHEET —

**Host:** Rabbit**Clonality:** Recombinant**GeneID:** 4821**Target:** Nkx2.2**Isotype:** IgG**CloneNo.:** 19B8**SWISS:** O95096**Applications:** WB (1:500-2000)**ICC/IF** (1:50-200)**Reactivity:** Human, Rat  
(predicted: Mouse)**Predicted  
MW.:** 30**Subcellular  
Location:** Nucleus**Immunogen:** A synthesized peptide derived from human Nkx 2.2: 1-140/273.**Purification:** affinity purified by Protein A**Storage:** 10mM phosphate buffered saline(pH 7.4) with 150mM sodium chloride, 0.05% BSA, 0.02% Proclin300 and 50% glycerol.  
Store at 4°C for short term. Store at -20°C for long term. Avoid repeated freeze/thaw cycles.**Background:** Transcriptional activator involved in the development of insulin-producing beta cells in the endocrine pancreas.

### — VALIDATION IMAGES —



25 ug total protein per lane of various lysates (see on figure) probed with Nkx2.2 monoclonal antibody, unconjugated (bsm-61814R) at 1:1000 dilution and 4°C overnight incubation. Followed by conjugated secondary antibody incubation at r.t. for 60 min.



4% Paraformaldehyde-fixed A673 (H) cell; Triton X-100 at r.t. for 20 min; Antibody incubation with (Nkx2.2) monoclonal Antibody, unconjugated (bsm-61814R) 1:100, 90 min at 37°C; followed by conjugated Goat Anti-Rabbit IgG antibody (green, bs-40295G-FITC) at 37°C for 90 min, DAPI (blue, C02-04002) was used to stain the cell nuclei. PBS instead of the primary antibody was used as the blank control.