

bsm-61812R**[Primary Antibody]****GRB7 Recombinant Rabbit mAb****Bioss**
ANTIBODIES

www.bioss.com.cn

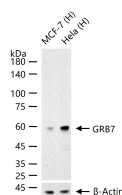
sales@bioss.com.cn

techsupport@bioss.com.cn

400-901-9800

— DATASHEET —

Host: Rabbit	Isotype: IgG	Applications: WB (1:500-2000) IHC-P (1:100-200) IHC-F (1:100-200) IF (1:100-200)
Clonality: Recombinant		
GeneID: 2886	SWISS: Q14451	
Target: GRB7		
Immunogen: A synthesized peptide derived from human GRB7: 1-100/532.		Reactivity: Human (predicted: Mouse, Rat)
Purification: affinity purified by Protein A		
Storage: 10mM phosphate buffered saline(pH 7.4) with 150mM sodium chloride, 0.05% BSA, 0.02% Proclin300 and 50% glycerol. Store at 4°C for short term. Store at -20°C for long term. Avoid repeated freeze/thaw cycles.		Predicted MW.: 60
Background: Interacts with the cytoplasmic domain of the epidermal growth factor receptor which is then inhibited. The interaction is mediated by the SH2 domain. Also binds to ERBB2.		Subcellular Location: Cell membrane

— VALIDATION IMAGES —

25 ug total protein per lane of various lysates (see on figure) probed with GRB7 monoclonal antibody, unconjugated (bsm-61812R) at 1:1000 dilution and 4°C overnight incubation. Followed by conjugated secondary antibody incubation at r.t. for 60 min.