

bsm-61810R**[Primary Antibody]****Bioss**
ANTIBODIES

www.bioss.com.cn

sales@bioss.com.cn

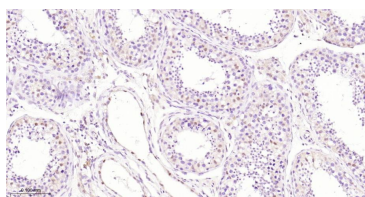
techsupport@bioss.com.cn

400-901-9800

TFE3 Recombinant Rabbit mAb**— DATASHEET —****Host:** Rabbit**Isotype:** IgG**Clonality:** Recombinant**CloneNo.:** 4G2**GeneID:** 7030**SWISS:** P19532**Target:** TFE3**Immunogen:** A synthesized peptide derived from human TFE3: 150-450.**Purification:** affinity purified by Protein A**Storage:** 10mM phosphate buffered saline(pH 7.4) with 150mM sodium chloride, 0.05% BSA, 0.02% Proclin300 and 50% glycerol. Store at 4°C for short term. Store at -20°C for long term. Avoid repeated freeze/thaw cycles.**Background:** Transcription factor that acts as a master regulator of lysosomal biogenesis and immune response . Specifically recognizes and binds E-box sequences (5'-CANNTG-3'); efficient DNA-binding requires dimerization with itself or with another MiT/TFE family member such as TFEB or MITF.**Applications:** IHC-P (1:50-200)

IHC-F (1:50-200)

IF (1:50-200)

Reactivity: Human**Predicted
MW.:** 62**Subcellular
Location:** Nucleus**— VALIDATION IMAGES —**

Paraformaldehyde-fixed, paraffin embedded
Human Testicles; Antigen retrieval by boiling in
sodium citrate buffer (pH6.0) for 15 min;
Antibody incubation with TFE3 Monoclonal
Antibody, Unconjugated(bsm-61810R) at 1:200
overnight at 4°C, followed by conjugation to the
bs-0295G-HRP and DAB (C-0010) staining.