

bsm-61802R**[Primary Antibody]**

Cadherin 16 Recombinant Rabbit mAb

Bioss
ANTIBODIES

www.bioss.com.cn

sales@bioss.com.cn

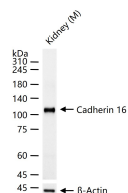
techsupport@bioss.com.cn

400-901-9800

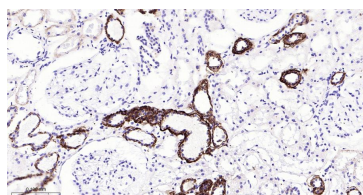
— DATASHEET —

Host: Rabbit**Isotype:** IgG**Clonality:** Recombinant**CloneNo.:** 12G2**GeneID:** 1014**SWISS:** O75309**Target:** Cadherin 16**Immunogen:** A synthesized peptide derived from human Cadherin 16: 50-180.**Purification:** affinity purified by Protein A**Storage:** 10mM phosphate buffered saline(pH 7.4) with 150mM sodium chloride, 0.05% BSA, 0.02% Proclin300 and 50% glycerol. Store at 4°C for short term. Store at -20°C for long term. Avoid repeated freeze/thaw cycles.**Background:** Cadherins are calcium-dependent cell adhesion proteins. They preferentially interact with themselves in a homophilic manner in connecting cells; cadherins may thus contribute to the sorting of heterogeneous cell types.**Applications:** **WB** (1:500-2000)
IHC-P (1:100-500)
IHC-F (1:100-500)
IF (1:100-500)
IP (1:20-50)**Reactivity:** Human, Mouse**Predicted
MW.:** 90**Subcellular
Location:** Cell membrane

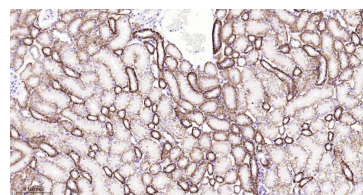
— VALIDATION IMAGES —



25 ug total protein per lane of various lysates (see on figure) probed with Cadherin 16 monoclonal antibody, unconjugated (bsm-61802R) at 1:1000 dilution and 4°C overnight incubation. Followed by conjugated secondary antibody incubation at r.t. for 60 min.



Paraformaldehyde-fixed, paraffin embedded Human Kidney; Antigen retrieval by boiling in sodium citrate buffer (pH6.0) for 15 min; Antibody incubation with Cadherin 16 Monoclonal Antibody, Unconjugated(bsm-61802R) at 1:200 overnight at 4°C, followed by conjugation to the bs-0295G-HRP and DAB (C-0010) staining.



Paraformaldehyde-fixed, paraffin embedded Mouse Kidney; Antigen retrieval by boiling in sodium citrate buffer (pH6.0) for 15 min; Antibody incubation with Cadherin 16 Monoclonal Antibody, Unconjugated(bsm-61802R) at 1:200 overnight at 4°C, followed by conjugation to the bs-0295G-HRP and DAB (C-0010) staining.