

bsm-61801R

[Primary Antibody]



www.bioss.com.cn

sales@bioss.com.cn

techsupport@bioss.com.cn

400-901-9800

TCL1A Recombinant Rabbit mAb

— DATASHEET —

Host: Rabbit

Isotype: IgG

Clonality: Recombinant

CloneNo.: 4G5

GeneID: 8115

SWISS: P56279

Target: TCL1A

Immunogen: A synthesized peptide derived from human TCL1A: 1-45/114.

Purification: affinity purified by Protein A

Storage: 10mM phosphate buffered saline(pH 7.4) with 150mM sodium chloride, 0.05% BSA, 0.02% Proclin300 and 50% glycerol. Store at 4°C for short term. Store at -20°C for long term. Avoid repeated freeze/thaw cycles.

Background: Enhances the phosphorylation and activation of AKT1, AKT2 and AKT3. Promotes nuclear translocation of AKT1. Enhances cell proliferation, stabilizes mitochondrial membrane potential and promotes cell survival.

Applications: IHC-P (1:100-500)

IHC-F (1:100-500)

IF (1:100-500)

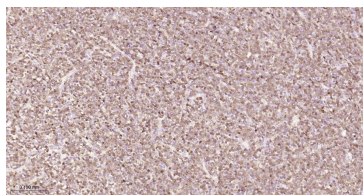
Flow-Cyt (1:50-100)

ICC/IF (1:50-200)

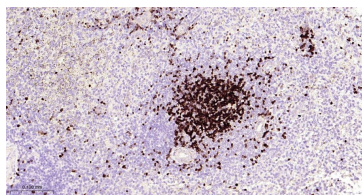
Reactivity: Human

Predicted MW.: 13

— VALIDATION IMAGES —



Paraformaldehyde-fixed, paraffin embedded Human Lymph; Antigen retrieval by boiling in sodium citrate buffer (pH6.0) for 15 min; Antibody incubation with TCL1A Monoclonal Antibody, Unconjugated(bsm-61801R) at 1:200 overnight at 4°C, followed by conjugation to the bs-0295G-HRP and DAB (C-0010) staining.



Paraformaldehyde-fixed, paraffin embedded Human Spleen; Antigen retrieval by boiling in sodium citrate buffer (pH6.0) for 15 min; Antibody incubation with TCL1A Monoclonal Antibody, Unconjugated(bsm-61801R) at 1:200 overnight at 4°C, followed by conjugation to the bs-0295G-HRP and DAB (C-0010) staining.