

bsm-61797R**[Primary Antibody]****BioSS**
ANTIBODIES

www.bioss.com.cn

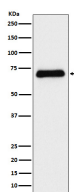
sales@bioss.com.cn

techsupport@bioss.com.cn

400-901-9800

Serotonin transporter Recombinant Rabbit mAb**— DATASHEET —**

Host: Rabbit	Isotype: IgG	Applications: WB (1:500-2000)
Clonality: Recombinant		Reactivity: Human, Mouse, Rat
GeneID: 6532	SWISS: P31645	
Target: Serotonin transporter		
Immunogen: A synthesized peptide derived from human Serotonin transporter: 50-100/630.		Predicted MW.: 70
Purification: affinity purified by Protein A		Subcellular Location: Cell membrane
Storage: 10mM phosphate buffered saline(pH 7.4) with 150mM sodium chloride, 0.05% BSA, 0.02% Proclin300 and 50% glycerol. Store at 4°C for short term. Store at -20°C for long term. Avoid repeated freeze/thaw cycles.		
Background: Serotonin transporter whose primary function in the central nervous system involves the regulation of serotonergic signaling via transport of serotonin molecules from the synaptic cleft back into the pre-synaptic terminal for re-utilization. Plays a key role in mediating regulation of the availability of serotonin to other receptors of serotonergic systems. Terminates the action of serotonin and recycles it in a sodium-dependent manner.		

— VALIDATION IMAGES —

Western blot analysis of Human fetal liver lysate.
Using Serotonin transporter (bsm-61797R)
monoclonal antibody at 1:1000 dilution and 4°C
overnight incubation. Followed by conjugated
secondary antibody incubation at r.t. for 60 min.