

bsm-61795R**[Primary Antibody]****Bioss**
ANTIBODIES

www.bioss.com.cn

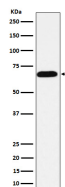
sales@bioss.com.cn

techsupport@bioss.com.cn

400-901-9800

ALPI Recombinant Rabbit mAb**— DATASHEET —**

Host: Rabbit	Isotype: IgG	Applications: WB (1:500-2000) IHC-P (1:50-200) IHC-F (1:50-200) IF (1:50-200) Reactivity: Human Predicted MW.: 57 Subcellular Location: Cell membrane
Clonality: Recombinant		
GeneID: 248	SWISS: P09923	
Target: ALPI		
Immunogen: A synthesized peptide derived from human Alkaline phosphatase: 1-55/528.		
Purification: affinity purified by Protein A		
Storage: 10mM phosphate buffered saline(pH 7.4) with 150mM sodium chloride, 0.05% BSA, 0.02% Proclin300 and 50% glycerol. Store at 4°C for short term. Store at -20°C for long term. Avoid repeated freeze/thaw cycles.		
Background: Alkaline phosphatase that can hydrolyze various phosphate compounds.		

— VALIDATION IMAGES —

Western blot analysis of HeLa cell lysate. Using ALPI (bsm-61795R) monoclonal antibody at 1:1000 dilution and 4°C overnight incubation. Followed by conjugated secondary antibody incubation at r.t. for 60 min.