

bsm-61793R**[Primary Antibody]****VPS26 Recombinant Rabbit mAb****BioSS**
ANTIBODIES

www.bioss.com.cn

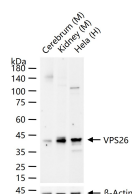
sales@bioss.com.cn

techsupport@bioss.com.cn

400-901-9800

— DATASHEET —

Host: Rabbit	Isotype: IgG	Applications: WB (1:500-2000) ICC/IF (1:50-200) IP (1:20-50) Reactivity: Human, Mouse (predicted: Rat) Predicted MW.: 38 Subcellular Location: Cytoplasm
Clonality: Recombinant		
GeneID: 9559	SWISS: O75436	
Target: VPS26		
Immunogen: A synthesized peptide derived from human VPS26A: 270-327/327.		
Purification: affinity purified by Protein A		
Storage: 10mM phosphate buffered saline(pH 7.4) with 150mM sodium chloride, 0.05% BSA, 0.02% Proclin300 and 50% glycerol. Store at 4°C for short term. Store at -20°C for long term. Avoid repeated freeze/thaw cycles.		
Background: Acts as a component of the retromer cargo-selective complex (CSC). The CSC is believed to be the core functional component of retromer or respective retromer complex variants acting to prevent missorting of selected transmembrane cargo proteins into the lysosomal degradation pathway.		

— VALIDATION IMAGES —

25 ug total protein per lane of various lysates (see on figure) probed with VPS26 monoclonal antibody, unconjugated (bsm-61793R) at 1:1000 dilution and 4°C overnight incubation. Followed by conjugated secondary antibody incubation at r.t. for 60 min.