

**bsm-61792R****[ Primary Antibody ]****OLFM4 Recombinant Rabbit mAb****Bioss**  
**ANTIBODIES**

www.bioss.com.cn

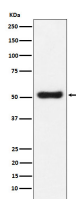
sales@bioss.com.cn

techsupport@bioss.com.cn

400-901-9800

**— DATASHEET —**

<b>Host:</b> Rabbit	<b>Isotype:</b> IgG	<b>Applications:</b> <b>WB</b> (1:500-2000) <b>IP</b> (1:20-50)
<b>Clonality:</b> Recombinant		<b>Reactivity:</b> Human, Mouse, Rat
<b>GeneID:</b> 10562	<b>SWISS:</b> Q6UX06	
<b>Target:</b> OLFM4		
<b>Immunogen:</b> A synthesized peptide derived from human Olfactomedin 4: 100-157.		
<b>Purification:</b> affinity purified by Protein A		<b>Predicted MW.:</b> 57
<b>Storage:</b> 10mM phosphate buffered saline(pH 7.4) with 150mM sodium chloride, 0.05% BSA, 0.02% Proclin300 and 50% glycerol. Store at 4°C for short term. Store at -20°C for long term. Avoid repeated freeze/thaw cycles.		<b>Subcellular Location:</b> Secreted ,Extracellular matrix ,Cell membrane ,Cytoplasm
<b>Background:</b> May promote proliferation of pancreatic cancer cells by favoring the transition from the S to G2/M phase. In myeloid leukemic cell lines, inhibits cell growth and induces cell differentiation and apoptosis.		

**— VALIDATION IMAGES —**

Western blot analysis of LnCaP cell lysate. Using OLFM4 (bsm-61792R) monoclonal antibody at 1:1000 dilution and 4°C overnight incubation. Followed by conjugated secondary antibody incubation at r.t. for 60 min.