

**bsm-61790R****[ Primary Antibody ]**

www.bioss.com.cn

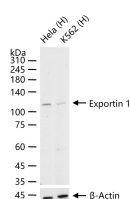
sales@bioss.com.cn

techsupport@bioss.com.cn

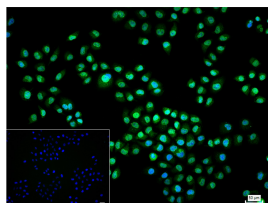
400-901-9800

**Exportin 1 Recombinant Rabbit mAb****— DATASHEET —**

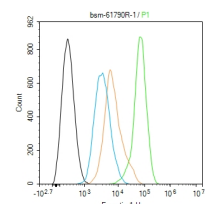
<b>Host:</b> Rabbit	<b>Isotype:</b> IgG	<b>Applications:</b> <b>WB</b> (1:500-2000) <b>IHC-P</b> (1:100-200) <b>IHC-F</b> (1:100-200) <b>IF</b> (1:50-200) <b>Flow-Cyt</b> (1:50-100) <b>ICC/IF</b> (1:50-200)
<b>Clonality:</b> Recombinant	<b>CloneNo.:</b> 10G9	
<b>GeneID:</b> 7514	<b>SWISS:</b> O14980	
<b>Target:</b> Exportin 1		
<b>Immunogen:</b> A synthesized peptide derived from human Exportin 1: 1000-1071/1071.		
<b>Purification:</b> affinity purified by Protein A		<b>Reactivity:</b> Human (predicted: Mouse, Rat)
<b>Storage:</b> 10mM phosphate buffered saline(pH 7.4) with 150mM sodium chloride, 0.05% BSA, 0.02% Proclin300 and 50% glycerol. Store at 4°C for short term. Store at -20°C for long term. Avoid repeated freeze/thaw cycles.		
<b>Background:</b> Mediates the nuclear export of cellular proteins (cargos) bearing a leucine-rich nuclear export signal (NES) and of RNAs. In the nucleus, in association with RANBP3, binds cooperatively to the NES on its target protein and to the GTPase RAN in its active GTP-bound form (Ran-GTP). Docking of this complex to the nuclear pore complex (NPC) is mediated through binding to nucleoporins.		
		<b>Predicted MW.:</b> 123 <b>Subcellular Location:</b> Cytoplasm ,Nucleus

**— VALIDATION IMAGES —**

25 ug total protein per lane of various lysates (see on figure) probed with Exportin 1 monoclonal antibody, unconjugated (bsm-61790R) at 1:1000 dilution and 4°C overnight incubation. Followed by conjugated secondary antibody incubation at r.t. for 60 min.



4% Paraformaldehyde-fixed HeLa (H) cell; Triton X-100 at r.t. for 20 min; Antibody incubation with (Exportin 1) monoclonal Antibody, unconjugated (bsm-61790R) 1:100, 90 min at 37°C; followed by conjugated Goat Anti-Rabbit IgG antibody (green, bs-60295G-BF488) at 37°C for 90 min, DAPI (blue, C02-04002) was used to stain the cell nuclei. PBS instead of the primary antibody was used as the blank control.



The HeLa (H) cells were fixed with 4% PFA (10 min at r.t.) and then permeabilized with 90% ice-cold methanol for 20 min at -20°C, the cells then were incubated in 5%BSA to block non-specific protein-protein interactions (30 min at r.t.). Primary Antibody (green): Rabbit Anti-Exportin 1 antibody (bs-61790R, 1:100); Secondary Antibody (white blue): Goat anti-Rabbit IgG-BF488 (bs-60295G-BF488): 1 µg/test. Isotype Control (orange): Rabbit IgG (bs-0295P). Blank control (black): PBS. Acquisition of 20,000 events was performed.