

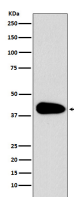
**bsm-61786R****[ Primary Antibody ]****Bioss**  
ANTIBODIES

www.bioss.com.cn

sales@bioss.com.cn

techsupport@bioss.com.cn

400-901-9800

**PAR6 Recombinant Rabbit mAb****DATASHEET****Host:** Rabbit**Isotype:** IgG**Clonality:** Recombinant**GeneID:** 50855**SWISS:** Q9NPB6**Target:** PAR6**Immunogen:** A synthesized peptide derived from human PAR6 alpha: 1-66/346.**Purification:** affinity purified by Protein A**Storage:** 10mM phosphate buffered saline(pH 7.4) with 150mM sodium chloride, 0.05% BSA, 0.02% Proclin300 and 50% glycerol.  
Store at 4°C for short term. Store at -20°C for long term. Avoid repeated freeze/thaw cycles.**Background:** Adapter protein involved in asymmetrical cell division and cell polarization processes. Probably involved in the formation of epithelial tight junctions. Association with PARD3 may prevent the interaction of PARD3 with F11R/JAM1, thereby preventing tight junction assembly. The PARD6-PARD3 complex links GTP-bound Rho small GTPases to atypical protein kinase C proteins.**Applications:** **WB** (1:1000-2000)  
**IP** (1:20-50)**Reactivity:** Human, Mouse, Rat**Predicted  
MW.:** 37**Subcellular  
Location:** Cell membrane ,Cytoplasm**VALIDATION IMAGES**

Western blot analysis of Jurkat cell lysate. Using PAR6 (bsm-61786R) monoclonal antibody at 1:1000 dilution and 4°C overnight incubation. Followed by conjugated secondary antibody incubation at r.t. for 60 min.