

bsm-61782R**[Primary Antibody]****BioSS**
ANTIBODIES

www.bioss.com.cn

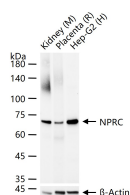
sales@bioss.com.cn

techsupport@bioss.com.cn

400-901-9800

NPRC Recombinant Rabbit mAb**— DATASHEET —**

Host: Rabbit	Isotype: IgG	Applications: WB (1:500-2000) Flow-Cyt (1:50-100) Reactivity: Human, Mouse, Rat Predicted MW.: 60 Subcellular Location: Cell membrane
Clonality: Recombinant	CloneNo.: 6G4	
GeneID: 4883	SWISS: P17342	
Target: NPRC		
Immunogen: A synthesized peptide derived from human NPR3: 500-541/541.		
Purification: affinity purified by Protein A		
Storage: 10mM phosphate buffered saline(pH 7.4) with 150mM sodium chloride, 0.05% BSA, 0.02% Proclin300 and 50% glycerol. Store at 4°C for short term. Store at -20°C for long term. Avoid repeated freeze/thaw cycles.		
Background: Receptor for the natriuretic peptide hormones, binding with similar affinities atrial natriuretic peptide NPPA/ANP, brain natriuretic peptide NPPB/BNP, and C-type natriuretic peptide NPPC/CNP. May function as a clearance receptor for NPPA, NPPB and NPPC, regulating their local concentrations and effects. May regulate diuresis, blood pressure and skeletal development.		

— VALIDATION IMAGES —

25 ug total protein per lane of various lysates (see on figure) probed with NPRC monoclonal antibody, unconjugated (bsm-61782R) at 1:1000 dilution and 4°C overnight incubation. Followed by conjugated secondary antibody incubation at r.t. for 60 min.