

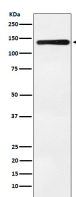
bsm-61781R**[Primary Antibody]****Bioss**
ANTIBODIES

www.bioss.com.cn

sales@bioss.com.cn

techsupport@bioss.com.cn

400-901-9800

Bub1 Recombinant Rabbit mAb**— DATASHEET —****Host:** Rabbit**Isotype:** IgG**Clonality:** Recombinant**GeneID:** 699**SWISS:** O43683**Target:** Bub1**Immunogen:** A synthesized peptide derived from human BUB1: 1-200/1085.**Purification:** affinity purified by Protein A**Storage:** 10mM phosphate buffered saline(pH 7.4) with 150mM sodium chloride, 0.05% BSA, 0.02% Proclin300 and 50% glycerol. Store at 4°C for short term. Store at -20°C for long term. Avoid repeated freeze/thaw cycles.**Background:** Serine/threonine-protein kinase that performs 2 crucial functions during mitosis: it is essential for spindle-assembly checkpoint signaling and for correct chromosome alignment. Has a key role in the assembly of checkpoint proteins at the kinetochore, being required for the subsequent localization of CENPF, BUB1B, CENPE and MAD2L1.**Applications:** WB (1:1000-2000)**IHC-P** (1:100-200)**IHC-F** (1:100-200)**IF** (1:100-200)**Reactivity:** Human, Mouse, Rat**Predicted
MW.:** 122**Subcellular
Location:** Nucleus**— VALIDATION IMAGES —**

Western blot analysis of K562 cell lysate. Using Bub1 (bsm-61781R) monoclonal antibody at 1:1000 dilution and 4°C overnight incubation. Followed by conjugated secondary antibody incubation at r.t. for 60 min.