

bsm-61776R**[Primary Antibody]**

BioSS
ANTIBODIES

www.bioss.com.cn

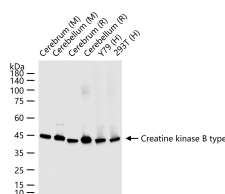
sales@bioss.com.cn

techsupport@bioss.com.cn

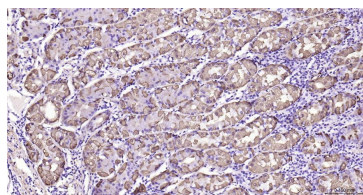
400-901-9800

Creatine kinase B type Recombinant Rabbit mAb**— DATASHEET —**

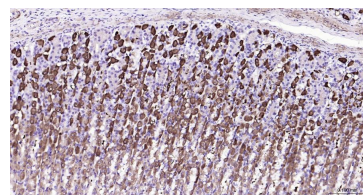
Host: Rabbit	Isotype: IgG	Applications: WB (1:500-2000) IHC-P (1:50-200) IHC-F (1:50-200) IF (1:50-200) Flow-Cyt (1:50-100) ICC/IF (1:50-200) IP (1:20-50)
Clonality: Recombinant	CloneNo.: 10G4	
GeneID: 1152	SWISS: P06732	
Target: Creatine kinase B type		
Immunogen: A synthesized peptide derived from human Creatine kinase B type: 50-100/381.		
Purification: affinity purified by Protein A		Reactivity: Human, Mouse, Rat
Storage: 10mM phosphate buffered saline(pH 7.4) with 150mM sodium chloride, 0.05% BSA, 0.02% Proclin300 and 50% glycerol. Store at 4°C for short term. Store at -20°C for long term. Avoid repeated freeze/thaw cycles.		Predicted MW.: 43
Background: Reversibly catalyzes the transfer of phosphate between ATP and various phosphogens (e.g. creatine phosphate). Creatine kinase isoenzymes play a central role in energy transduction in tissues with large, fluctuating energy demands, such as skeletal muscle, heart, brain and spermatozoa (Probable). Acts as a key regulator of adaptive thermogenesis as part of the futile creatine cycle: localizes to the mitochondria of thermogenic fat cells and acts by mediating phosphorylation of creatine to initiate a futile cycle of creatine phosphorylation and dephosphorylation.		Subcellular Location: Cytoplasm

— VALIDATION IMAGES —

25 ug total protein per lane of various lysates (see on figure) probed with Creatine kinase B type monoclonal antibody, unconjugated (bsm-61776R) at 1:1000 dilution and 4°C overnight incubation. Followed by conjugated secondary antibody incubation at r.t. for 60 min.



Paraformaldehyde-fixed, paraffin embedded Human Stomach; Antigen retrieval by boiling in sodium citrate buffer (pH6.0) for 15 min; Antibody incubation with Creatine kinase B type Monoclonal Antibody, Unconjugated(bsm-61776R) at 1:200 overnight at 4°C, followed by conjugation to the bs-0295G-HRP and DAB (C-0010) staining.



Paraformaldehyde-fixed, paraffin embedded Mouse Stomach; Antigen retrieval by boiling in sodium citrate buffer (pH6.0) for 15 min; Antibody incubation with Creatine kinase B type Monoclonal Antibody, Unconjugated(bsm-61776R) at 1:200 overnight at 4°C, followed by conjugation to the bs-0295G-HRP and DAB (C-0010) staining.