

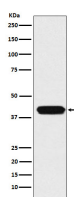
bsm-61775R**[Primary Antibody]****Bioss**
ANTIBODIES

www.bioss.com.cn

sales@bioss.com.cn

techsupport@bioss.com.cn

400-901-9800

MATH1 Recombinant Rabbit mAb**— DATASHEET —****Host:** Rabbit**Isotype:** IgG**Clonality:** Recombinant**GeneID:** 474**SWISS:** Q92858**Target:** MATH1**Immunogen:** A synthesized peptide derived from human ATOH1: 10-31.**Purification:** affinity purified by Protein A**Storage:** 10mM phosphate buffered saline(pH 7.4) with 150mM sodium chloride, 0.05% BSA, 0.02% Proclin300 and 50% glycerol.
Store at 4°C for short term. Store at -20°C for long term. Avoid repeated freeze/thaw cycles.**Background:** Transcriptional regulator. Activates E box-dependent transcription in collaboration with TCF3/E47, but the activity is completely antagonized by the negative regulator of neurogenesis HES1. Plays a role in the differentiation of subsets of neural cells by activating E box-dependent transcription.**Applications:** WB (1:1000-2000)**Reactivity:** Human, Mouse, Rat**Predicted
MW.:** 38**Subcellular
Location:** Nucleus**— VALIDATION IMAGES —**

Western blot analysis of HepG2 cell lysate. Using MATH1 (bsm-61775R) monoclonal antibody at 1:1000 dilution and 4°C overnight incubation. Followed by conjugated secondary antibody incubation at r.t. for 60 min.