

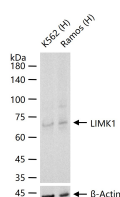
bsm-61772R**[Primary Antibody]****LIMK1 Recombinant Rabbit mAb****BioSS**
ANTIBODIES

www.bioss.com.cn

sales@bioss.com.cn

techsupport@bioss.com.cn

400-901-9800

DATASHEET**Host:** Rabbit**Isotype:** IgG**Clonality:** Recombinant**CloneNo.:** 4D1**GeneID:** 3984**SWISS:** P53667**Target:** LIMK1**Immunogen:** A synthesized peptide derived from human LIMK 1: 1-57/647.**Purification:** affinity purified by Protein A**Storage:** 10mM phosphate buffered saline(pH 7.4) with 150mM sodium chloride, 0.05% BSA, 0.02% Proclin300 and 50% glycerol. Store at 4°C for short term. Store at -20°C for long term. Avoid repeated freeze/thaw cycles.**Background:** Serine/threonine-protein kinase that plays an essential role in the regulation of actin filament dynamics. Acts downstream of several Rho family GTPase signal transduction pathways. Activated by upstream kinases including ROCK1, PAK1 and PAK4, which phosphorylate LIMK1 on a threonine residue located in its activation loop.**Applications:** WB (1:500-2000)**Reactivity:** Human (predicted: Mouse, Rat)**Predicted MW.:** 73**Subcellular Location:** Cytoplasm ,Nucleus**VALIDATION IMAGES**

25 ug total protein per lane of various lysates (see on figure) probed with LIMK1 monoclonal antibody, unconjugated (bsm-61772R) at 1:1000 dilution and 4°C overnight incubation. Followed by conjugated secondary antibody incubation at r.t. for 60 min.