

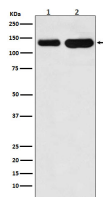
bsm-61762R**[Primary Antibody]****CDH6 Recombinant Rabbit mAb****Bioss**
ANTIBODIES

www.bioss.com.cn

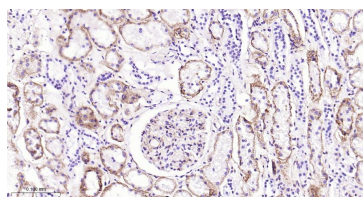
sales@bioss.com.cn

techsupport@bioss.com.cn

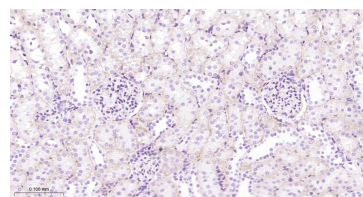
400-901-9800

— DATASHEET —**Host:** Rabbit**Isotype:** IgG**Clonality:** Recombinant**CloneNo.:** 5D2**GeneID:** 1004**SWISS:** P55285**Target:** CDH6**Immunogen:** A synthesized peptide derived from human Cadherin 6: 740-790.**Purification:** affinity purified by Protein A**Storage:** 10mM phosphate buffered saline(pH 7.4) with 150mM sodium chloride, 0.05% BSA, 0.02% Proclin300 and 50% glycerol. Store at 4°C for short term. Store at -20°C for long term. Avoid repeated freeze/thaw cycles.**Background:** Cadherins are calcium-dependent cell adhesion proteins. They preferentially interact with themselves in a homophilic manner in connecting cells; cadherins may thus contribute to the sorting of heterogeneous cell types.**Applications:** **WB** (1:500-2000)**IHC-P** (1:50-200)**IHC-F** (1:50-200)**IF** (1:50-200)**IP** (1:20-50)**Reactivity:** Human, Mouse, Rat**Predicted
MW.:** 88**Subcellular
Location:** Cell membrane**— VALIDATION IMAGES —**

Western blot analysis of (1) Jurkat cell lysate; (2) Mouse heart lysate. Using K Cadherin (bsm-61762R) monoclonal antibody at 1:1000 dilution and 4°C overnight incubation. Followed by conjugated secondary antibody incubation at r.t. for 60 min.



Paraformaldehyde-fixed, paraffin embedded Human Kidney; Antigen retrieval by boiling in sodium citrate buffer (pH6.0) for 15 min; The section was incubated with CDH6 Monoclonal Antibody, Unconjugated (bsm-61762R) at 1:200 overnight at 4°C, followed by conjugation to the bs-0295G-HRP and DAB (C-0010) staining.



Paraformaldehyde-fixed, paraffin embedded Rat Kidney; Antigen retrieval by boiling in sodium citrate buffer (pH6.0) for 15 min; The section was incubated with CDH6 Monoclonal Antibody, Unconjugated (bsm-61762R) at 1:200 overnight at 4°C, followed by conjugation to the bs-0295G-HRP and DAB (C-0010) staining.