

**bsm-61761R****[ Primary Antibody ]**

## Prostate Secretory Protein/PSP Recombinant Rabbit mAb

**BioSS**  
**ANTIBODIES**

www.bioss.com.cn

sales@bioss.com.cn

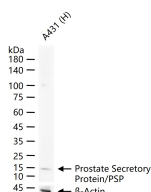
techsupport@bioss.com.cn

400-901-9800

### — DATASHEET —

<b>Host:</b> Rabbit	<b>Isotype:</b> IgG	<b>Applications:</b> <b>WB</b> (1:500-2000) <b>IHC-P</b> (1:100-200) <b>IHC-F</b> (1:100-200) <b>IF</b> (1:100-200) <b>IP</b> (1:20-50)  <b>Reactivity:</b> Human   <b>Predicted MW.:</b> 13  <b>Subcellular Location:</b> Secreted
<b>Clonality:</b> Recombinant	<b>CloneNo.:</b> 8D3	
<b>GeneID:</b> 4477	<b>SWISS:</b> P08118	
<b>Target:</b> Prostate Secretory Protein/PSP		
<b>Immunogen:</b> A synthesized peptide derived from human beta 2 Microseminoprotein: 2-52/114.		
<b>Purification:</b> affinity purified by Protein A		
<b>Storage:</b> 10mM phosphate buffered saline(pH 7.4) with 150mM sodium chloride, 0.05% BSA, 0.02% Proclin300 and 50% glycerol. Store at 4°C for short term. Store at -20°C for long term. Avoid repeated freeze/thaw cycles.		
<b>Background:</b> The protein encoded by this gene is a member of the immunoglobulin binding factor family. It is synthesized by the epithelial cells of the prostate gland and secreted into the seminal plasma. This protein has inhibin-like activity. It may have a role as an autocrine paracrine factor in uterine, breast and other female reproductive tissues. The expression of the encoded protein is found to be decreased in prostate cancer.		

### — VALIDATION IMAGES —



25 ug total protein per lane of various lysates (see on figure) probed with Prostate Secretory Protein/PSP monoclonal antibody, unconjugated (bsm-61761R) at 1:1000 dilution and 4°C overnight incubation. Followed by conjugated secondary antibody incubation at r.t. for 60 min.