

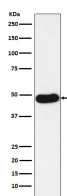
**bsm-61759R****[ Primary Antibody ]****NAPSIN A Recombinant Rabbit mAb****Bioss**  
**ANTIBODIES**

www.bioss.com.cn

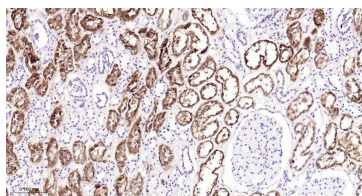
sales@bioss.com.cn

techsupport@bioss.com.cn

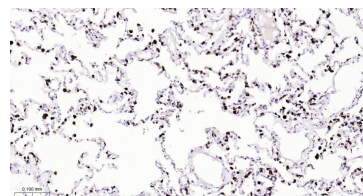
400-901-9800

**— DATASHEET —****Host:** Rabbit**Clonality:** Recombinant**GeneID:** 9476**Target:** NAPSIN A**Isotype:** IgG**CloneNo.:** 4D9**SWISS:** O96009**Applications:** **WB** (1:500-2000)  
**IHC-P** (1:100-500)  
**IHC-F** (1:100-500)  
**IF** (1:100-500)  
**IP** (1:20-50)**Reactivity:** Human**Predicted  
MW.:** 45**Subcellular  
Location:** Secreted**Immunogen:** A synthesized peptide derived from human Napsin A: 1-136.**Purification:** affinity purified by Protein A**Storage:** 10mM phosphate buffered saline(pH 7.4) with 150mM sodium chloride, 0.05% BSA, 0.02% Proclin300 and 50% glycerol.  
Store at 4°C for short term. Store at -20°C for long term. Avoid repeated freeze/thaw cycles.**Background:** May be involved in processing of pneumocyte surfactant precursors.**— VALIDATION IMAGES —**

Western blot analysis of Human lung adenocarcinoma lysate. Using NAPSIN A (bsm-61759R) monoclonal antibody at 1:1000 dilution and 4°C overnight incubation. Followed by conjugated secondary antibody incubation at r.t. for 60 min.



Paraformaldehyde-fixed, paraffin embedded Human Kidney; Antigen retrieval by boiling in sodium citrate buffer (pH6.0) for 15 min; Antibody incubation with NAPSIN A Monoclonal Antibody, Unconjugated(bsm-61759R) at 1:200 overnight at 4°C, followed by conjugation to the bs-0295G-HRP and DAB (C-0010) staining.



Paraformaldehyde-fixed, paraffin embedded Human Lung; Antigen retrieval by boiling in sodium citrate buffer (pH6.0) for 15 min; Antibody incubation with NAPSIN A Monoclonal Antibody, Unconjugated(bsm-61759R) at 1:200 overnight at 4°C, followed by conjugation to the bs-0295G-HRP and DAB (C-0010) staining.