

bsm-61758R**[Primary Antibody]****BioSS**
ANTIBODIES

www.bioss.com.cn

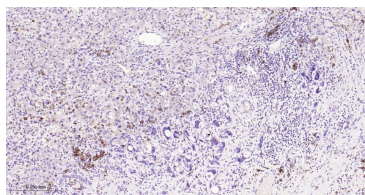
sales@bioss.com.cn

techsupport@bioss.com.cn

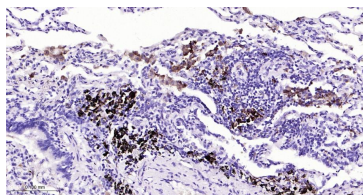
400-901-9800

TRAP Recombinant Rabbit mAb**— DATASHEET —**

Host: Rabbit	Isotype: IgG	Applications: IHC-P (1:50-200) IHC-F (1:50-200) IF (1:50-200) Reactivity: Human Predicted MW.: 37 Subcellular Location: Cytoplasm
Clonality: Recombinant	CloneNo.: 2D12	
GeneID: 54	SWISS: P13686	
Target: TRAP		
Immunogen: A synthesized peptide derived from human TRAP: 150-325.		
Purification: affinity purified by Protein A		
Storage: 10mM phosphate buffered saline(pH 7.4) with 150mM sodium chloride, 0.05% BSA, 0.02% Proclin300 and 50% glycerol. Store at 4°C for short term. Store at -20°C for long term. Avoid repeated freeze/thaw cycles.		
Background: Involved in osteopontin/bone sialoprotein dephosphorylation. Its expression seems to increase in certain pathological states such as Gaucher and Hodgkin diseases, the hairy cell, the B-cell, and the T-cell leukemias.		

— VALIDATION IMAGES —

Paraformaldehyde-fixed, paraffin embedded Human Liver Cancer; Antigen retrieval by boiling in sodium citrate buffer (pH6.0) for 15 min; The section was incubated with TRAP Monoclonal Antibody, Unconjugated (bsm-61758R) at 1:200 overnight at 4°C, followed by conjugation to the bs-0295G-HRP and DAB (C-0010) staining.



Paraformaldehyde-fixed, paraffin embedded Human Lung; Antigen retrieval by boiling in sodium citrate buffer (pH6.0) for 15 min; The section was incubated with TRAP Monoclonal Antibody, Unconjugated (bsm-61758R) at 1:200 overnight at 4°C, followed by conjugation to the bs-0295G-HRP and DAB (C-0010) staining.

— SELECTED CITATIONS —

- **[IF=1.4]** Hikmah Nuzulul. et al. Role of cacao (Theobroma cacao L.) extracts in alveolar bone remodeling in diabetic rats during orthodontic tooth movements. J ADV PHARM TECHNOL. 2024 Oct;15(4):309 IHC ;Rat. 10.4103/JAPTR.JAPTR_166_24