

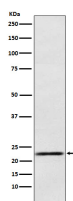
**bsm-61757R****[ Primary Antibody ]****PRL Recombinant Rabbit mAb****BioSS**  
**ANTIBODIES**

www.bioss.com.cn

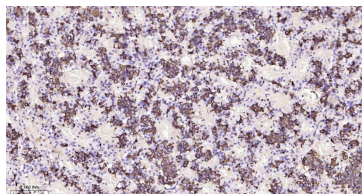
sales@bioss.com.cn

techsupport@bioss.com.cn

400-901-9800

**— DATASHEET —****Host:** Rabbit**Isotype:** IgG**Clonality:** Recombinant**CloneNo.:** 6D1**GeneID:** 5617**SWISS:** P01236**Target:** PRL**Immunogen:** A synthesized peptide derived from human Prolactin: 140-200/227.**Purification:** affinity purified by Protein A**Storage:** 10mM phosphate buffered saline(pH 7.4) with 150mM sodium chloride, 0.05% BSA, 0.02% Proclin300 and 50% glycerol. Store at 4°C for short term. Store at -20°C for long term. Avoid repeated freeze/thaw cycles.**Background:** Prolactin acts primarily on the mammary gland by promoting lactation.**Applications:** **WB** (1:500-2000)  
**IHC-P** (1:100-500)  
**IHC-F** (1:100-500)  
**IF** (1:100-500)**Reactivity:** Human**Predicted  
MW.:** 26**Subcellular  
Location:** Secreted**— VALIDATION IMAGES —**

Western blot analysis of Human fetal pituitary lysate. Using PRL (bsm-61757R) monoclonal antibody at 1:1000 dilution and 4°C overnight incubation. Followed by conjugated secondary antibody incubation at r.t. for 60 min.



Paraformaldehyde-fixed, paraffin embedded Human pituitary; Antigen retrieval by boiling in sodium citrate buffer (pH6.0) for 15 min; The section was incubated with PRL Monoclonal Antibody, Unconjugated (bsm-61757R) at 1:200 overnight at 4°C, followed by conjugation to the bs-0295G-HRP and DAB (C-0010) staining.