

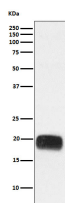
bsm-61754R**[Primary Antibody]****Mammaglobin A Recombinant Rabbit mAb****BioSS**
ANTIBODIES

www.bioss.com.cn

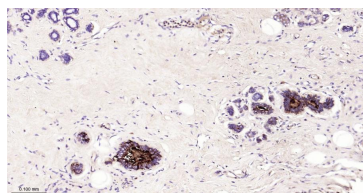
sales@bioss.com.cn

techsupport@bioss.com.cn

400-901-9800

— DATASHEET —**Host:** Rabbit**Isotype:** IgG**Clonality:** Recombinant**CloneNo.:** 3D7**GeneID:** 4250**SWISS:** Q13296**Target:** Mammaglobin A**Immunogen:** A synthesized peptide derived from human Mammaglobin A: 1-93.**Purification:** affinity purified by Protein A**Storage:** 10mM phosphate buffered saline(pH 7.4) with 150mM sodium chloride, 0.05% BSA, 0.02% Proclin300 and 50% glycerol. Store at 4°C for short term. Store at -20°C for long term. Avoid repeated freeze/thaw cycles.**Background:** SCGB2A2 Belongs to the secretoglobin family. Lipophilin subfamily. 2 isoforms of the human protein are produced by alternative splicing.**Applications:** WB (1:500-2000)**IHC-P** (1:50-200)**IHC-F** (1:50-200)**IF** (1:50-200)**Reactivity:** Human (predicted: Rat)**Predicted
MW.:** 10**Subcellular
Location:** Secreted**— VALIDATION IMAGES —**

Western blot analysis of Human breast cancer lysate. Using Mammaglobin A (bsm-61754R) monoclonal antibody at 1:1000 dilution and 4°C overnight incubation. Followed by conjugated secondary antibody incubation at r.t. for 60 min.



Paraformaldehyde-fixed, paraffin embedded Human Breast; Antigen retrieval by boiling in sodium citrate buffer (pH6.0) for 15 min; Antibody incubation with Mammaglobin A Monoclonal Antibody, Unconjugated(bsm-61754R) at 1:200 overnight at 4°C, followed by conjugation to the bs-0295G-HRP and DAB (C-0010) staining.