

**bsm-61751R**

**[ Primary Antibody ]**

## Glycophorin C/CD236 Recombinant Rabbit mAb

**Bioss**  
ANTIBODIES

www.bioss.com.cn

sales@bioss.com.cn

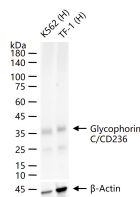
techsupport@bioss.com.cn

400-901-9800

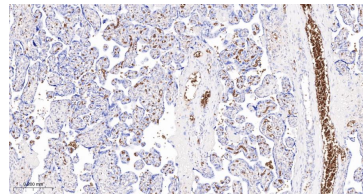
### — DATASHEET —

<b>Host:</b> Rabbit	<b>Isotype:</b> IgG	<b>Applications:</b> WB (1:500-2000) IHC-P (1:100-500) IHC-F (1:100-500) IF (1:100-500) Flow-Cyt (1:50-100) ICC/IF (1:50-200) IP (1:20-50)
<b>Clonality:</b> Recombinant		
<b>GeneID:</b> 2995	<b>SWISS:</b> P04921	
<b>Target:</b> Glycophorin C/CD236		
<b>Immunogen:</b> A synthesized peptide derived from human Glycophorin C: 80-128/128.		
<b>Purification:</b> affinity purified by Protein A		
<b>Storage:</b> 10mM phosphate buffered saline(pH 7.4) with 150mM sodium chloride, 0.05% BSA, 0.02% Proclin300 and 50% glycerol. Store at 4°C for short term. Store at -20°C for long term. Avoid repeated freeze/thaw cycles.	<b>Reactivity:</b> Human	
<b>Background:</b> This protein is a minor sialoglycoprotein in human erythrocyte membranes. The blood group Gerbich antigens and receptors for Plasmodium falciparum merozoites are most likely located within the extracellular domain. Glycophorin-C plays an important role in regulating the stability of red cells.	<b>Predicted MW.:</b> 14	
	<b>Subcellular Location:</b> Cell membrane	

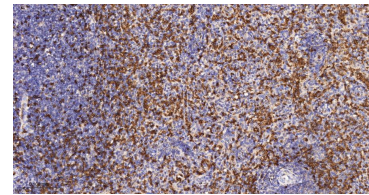
### — VALIDATION IMAGES —



25 ug total protein per lane of various lysates (see on figure) probed with Glycophorin C/CD236 monoclonal antibody, unconjugated (bsm-61751R) at 1:1000 dilution and 4°C overnight incubation. Followed by conjugated secondary antibody incubation at r.t. for 60 min.



Paraformaldehyde-fixed, paraffin embedded Human Placenta; Antigen retrieval by boiling in sodium citrate buffer (pH6.0) for 15 min; The section was incubated with Glycophorin C/CD236 Monoclonal Antibody, Unconjugated (bsm-61751R) at 1:200 overnight at 4°C, followed by conjugation to the bs-0295G-HRP and DAB (C-0010) staining.



Paraformaldehyde-fixed, paraffin embedded Human Spleen; Antigen retrieval by boiling in sodium citrate buffer (pH6.0) for 15 min; The section was incubated with Glycophorin C/CD236 Monoclonal Antibody, Unconjugated (bsm-61751R) at 1:200 overnight at 4°C, followed by conjugation to the bs-0295G-HRP and DAB (C-0010) staining.