

**bsm-61748R****[ Primary Antibody ]****BioSS**  
**ANTIBODIES**

www.bioss.com.cn

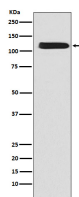
sales@bioss.com.cn

techsupport@bioss.com.cn

400-901-9800

**NCX1 Recombinant Rabbit mAb****— DATASHEET —**

<b>Host:</b> Rabbit	<b>Isotype:</b> IgG	<b>Applications:</b> WB (1:1000-2000)
<b>Clonality:</b> Recombinant		<b>Reactivity:</b> Human, Mouse, Rat
<b>GeneID:</b> 6546	<b>SWISS:</b> P32418	
<b>Target:</b> NCX1		
<b>Immunogen:</b> A synthesized peptide derived from human SLC8A1: 50-100/973.		<b>Predicted MW.:</b> 109
<b>Purification:</b> affinity purified by Protein A		<b>Subcellular Location:</b> Cell membrane ,Cytoplasm
<b>Storage:</b> 10mM phosphate buffered saline(pH 7.4) with 150mM sodium chloride, 0.05% BSA, 0.02% Proclin300 and 50% glycerol. Store at 4°C for short term. Store at -20°C for long term. Avoid repeated freeze/thaw cycles.		
<b>Background:</b> Mediates the exchange of one Ca <sup>2+</sup> ion against three to four Na <sup>+</sup> ions across the cell membrane, and thereby contributes to the regulation of cytoplasmic Ca <sup>2+</sup> levels and Ca <sup>2+</sup> -dependent cellular processes.		

**— VALIDATION IMAGES —**

Western blot analysis of K562 cell lysate. Using NCX1 (bsm-61748R) monoclonal antibody at 1:1000 dilution and 4°C overnight incubation. Followed by conjugated secondary antibody incubation at r.t. for 60 min.